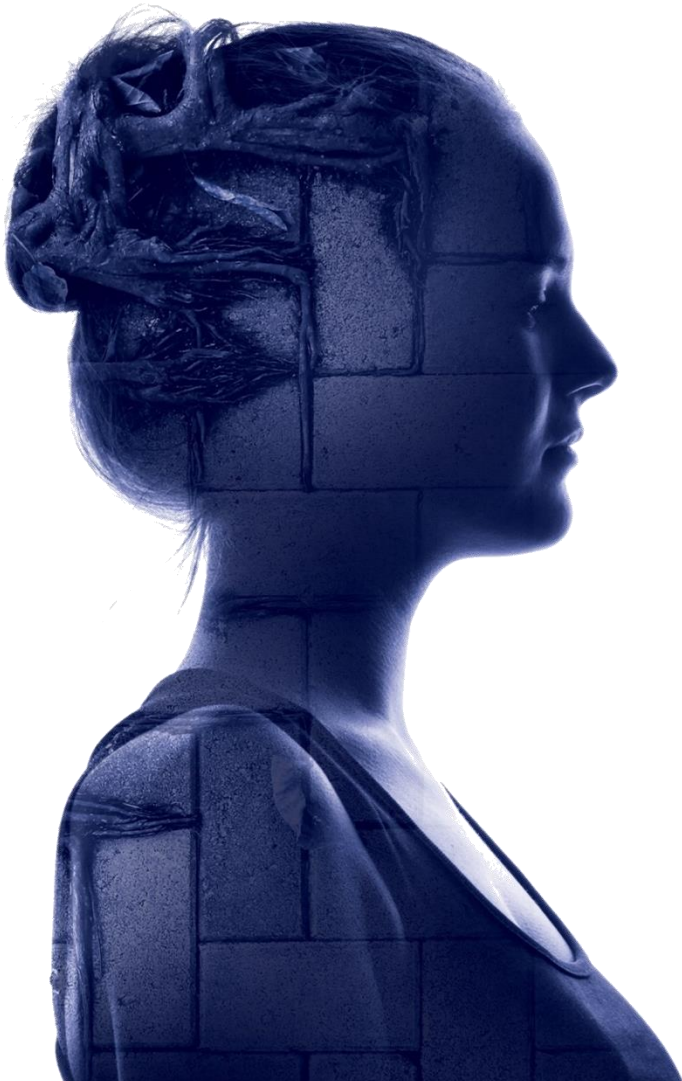


[www.rsb.org.uk](http://www.rsb.org.uk)



# Royal Society of Biology West Midlands

## Meet the Committee

Tuesday 06 October 2020

# Outline

- RSB Updates
- WM data
- WM events this year
- Meet the committee – well, some of them 😊
- WM events to come / in planning
- Questions for the committee / suggestions for future events

# RSB and COVID-19



## COVID-19 Bulletin

An RSB communication on the  
bioscience behind the outbreak and  
response  
6 April 2020

The RSB COVID-19 bulletin draws together current bioscience research and knowledge to help facilitate community understanding and response. It includes links to published news articles, publications, webpages and other resources. The material presented is not intended to be comprehensive and is up to date as of the date of publication, giving just a glimpse of the huge efforts worldwide to understand SARS-CoV-2 and its effects.

Research outcomes and conclusions may evolve over time, and readers should take action on the basis of medical advice and the latest advice from government, rather than necessarily relying solely on specific pieces of early research.

- Postponed all in-person events until further notice
- Big Biology Day grants suspended
- COVID-19 bulletin
- Online education resources / training courses / events

# Impact

The Royal Society of Biology welcomes everyone who has an interest in the biosciences, and our membership spans all seven continents.

The RSB's impact is built upon the knowledge and support of our members and we thank them for all their contributions and commitment, particularly towards our policy work.

Membership growth between 2009 and 2020

11,000  17,400

93% Of members surveyed are happy with their membership

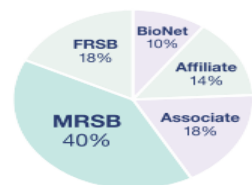
88% Of members surveyed would recommend membership to others

### Individual member benefits:

- Access to professional registers
- Reduced training course rates
- Monthly newsletters
- *The Biologist* magazine
- Access to RSB CPD scheme
- Awards and grants for members
- Career support and advice
- Events and networking

## Individual members

6 Different membership grades for individual members



Prominent contributor to the biosciences with 5+ years in a senior role

Bioscience graduate with more than 3 years of relevant work experience

Bioscience graduate with 0-3 years of relevant work experience

Keen interest in the life sciences - no formal qualification in biology is required

Undergrad studying for a BSc degree in a biology-related subject

School or college student aged 14-19 and interested in biology

Fellow (FRSB)

Member (MRSB)

Associate (AMRSB)

Affiliate

Student Affiliate

BioNet



39

**Honorary Fellowships**  
Honouring exceptional impact in the life sciences



20

**RSB Ambassadors**  
Widening the RSB's reach across industry and higher education

## Member Organisations

RSB membership is also open to learned societies, corporate bodies, councils, schools and colleges

### Organisational member benefits:

- Reduced rates for RSB membership
- Event partnership opportunities
- Discounted rates at events and courses
- Contribute to RSB policy work
- Free course approval for CPD recognition
- Join RSB working groups
- Monthly newsletters
- Publicise events through RSB channels

160

**Schools and Colleges Affiliation Scheme (SCAS)**  
Membership for schools and colleges, specifically designed to be accessible, affordable and to provide a wide range of benefits

90

**Membership Organisations**  
Typically biology-led, and have members themselves

7

**Membership services**  
RSB provides administrative services to 7 organisations



To find out more about the RSB membership, benefits and grades, contact:

[membership@rsb.org.uk](mailto:membership@rsb.org.uk)  
[rsb.org.uk/membership](https://rsb.org.uk/membership)

The Royal Society of Biology has a diverse network of branch committees who arrange a vibrant range of local events and activities for members, families and members of the public.

Over the last decade, the RSB's regional programme has grown in number and variety, and their calendar of events now includes trips, tours, lectures, workshops and public engagement.

### Branch activities and reach

100+ Events organised each year by branch committees

150+ Members who volunteer on our branch committees

20+ New social media accounts for branches

2,600+ Total number of followers across branch social media channels

### Supporting branches

Bi-annual working group meetings and annual meetings with branch committees and RSB staff

Online resources available for committee members covering event planning, finances, health and safety and more

3 Full time members of staff to support events and regional activity

111 Total number of recipients of the Regional Grant Scheme since its inception

£40,000 Total grant money awarded to support members run local events and activities

17 Regional branches in the UK

3 New branches since 2009

2 International branches



To get involved with your regional branch committee, contact:

[regions@rsb.org.uk](mailto:regions@rsb.org.uk)  
[rsb.org.uk/branches](http://rsb.org.uk/branches)

Over the last decade, the RSB has become a focal point for advice and comment; working closely with supporting organisations to ensure the voice of the biosciences is heard by governments and policymakers.

The RSB provides evidence, challenges assumptions and increases awareness of the breadth of knowledge and innovation. We also support voices from diverse backgrounds and ensure they are represented across the biosciences.

200+ Policy outputs published since 2009, covering a wide range of topics



20,000+ Subscribers to our weekly Science Policy Newsletter

"The RSB's Science Policy Newsletter is invaluable as it provides a clear and efficient snapshot of the latest developments on a weekly basis – it is high on my 'must read' list." **Professor Julia Buckingham CBE FRSB**

### Events

8 Voice of the Future events bringing younger scientists to Westminster

8 Policy Lates debate events, free and open to the public

8 Parliamentary Links Days, connecting MPs, peers, and the STEM community

We co-sponsor and provide senior representation at events across the UK

### Influence

The RSB brings experts together to advise policy and decision-makers in Government, Parliament, research funders and institutions, and other societies and organisations

28 Organisations in the **Animal Science Group**, that engages with the Home Office via the UK Bioscience Sector Coalition

21 Member Organisations collaborate through the **UK Plant Sciences Federation (UKPSF)**

23 Member Organisations share best practice through our Diversity and Inclusion Working Group **#biosciencesforall**

2 Major reports published on the future potential of the UK plant science sector

24 meetings and 3 summits organised by the **Natural Capital Initiative** to discuss ecosystem management

### RSB Policy Resource Library

Consultation responses Letters and comments Strategies and reviews Guidance and briefing notes

25+ Organisations' published resources which are freely available

800+ Collected policy resources available to search and read

Explore the RSB's free Policy Resource Library [rsb.org.uk/policylib](http://rsb.org.uk/policylib)

To find out more about our science policy activity and how to get involved: [policy@rsb.org.uk](mailto:policy@rsb.org.uk)  
[rsb.org.uk/policy](http://rsb.org.uk/policy)

# 1 Naoroji Street



# Winner of the Professional Publishers Awards Scotland



Specialist Magazine  
of the Year 2019



# Biology Week 2019

# 114

Events took place in the UK and abroad

**12** Events ran by Royal Society of Biology regional branches

**7** Events funded by the Biology Week Outreach and Engagement grant scheme



## #IAMBIOLOGIST TWITTER CAMPAIGN

 **2602**

Number of times #iambiologist was used during the social media campaign

 **1494**

Number of biologists who shared a photo of themselves in action as part of the campaign

 **72**

Different countries took part in the campaign

 **2,735,074**

Total reach of the #iambiologist campaign (number of people who saw at least one #iambiologist tweet)

## OUTREACH AND ENGAGEMENT

**500+** 

People attended events run by the RSB London office

**114** 

Politicians, members and stakeholders attended the Parliamentary reception

**232** 

People attended the annual Royal Institute debate 'Marine plastics: is it too late to save our oceans?'

**107** 

People attended the RSB Annual Awards Ceremony at the Francis Crick Institute, London

**4828** 

Votes cast in our favourite freshwater species poll, with the otter coming in first

**80** 

People attended Policy Lates: 'Insect declines in the headlights'

## COMPETITIONS AND AWARDS

 **2590**

Total competition entries for Biology Week 2019

 **1959**

Entries for the RSB Photography competition

 **565**

Entries submitted for the Nancy Rothwell Award

 **40**

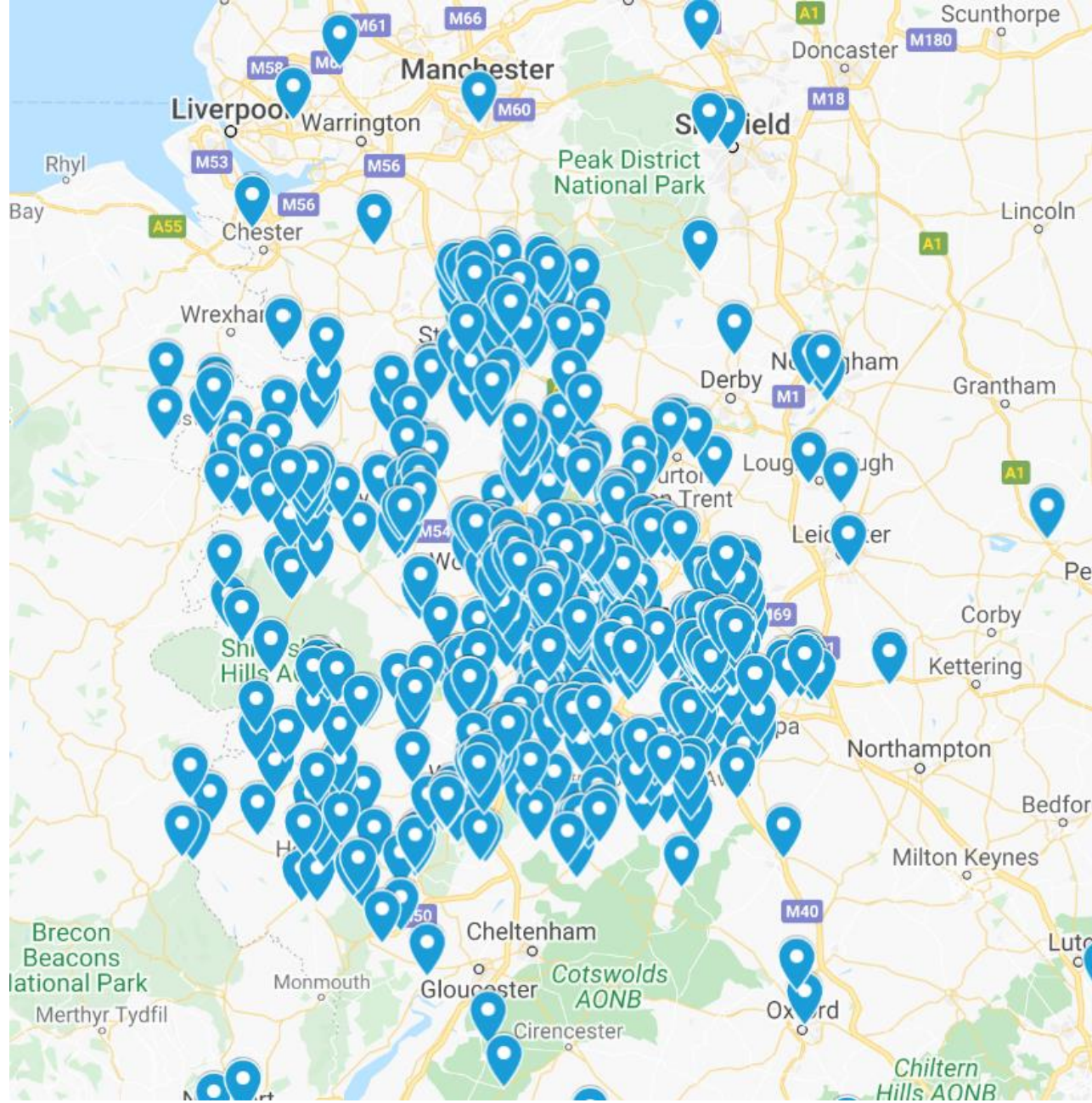
Entries for #BioArtAttack competition

 **26**

Entries for the Outreach and Engagement Awards



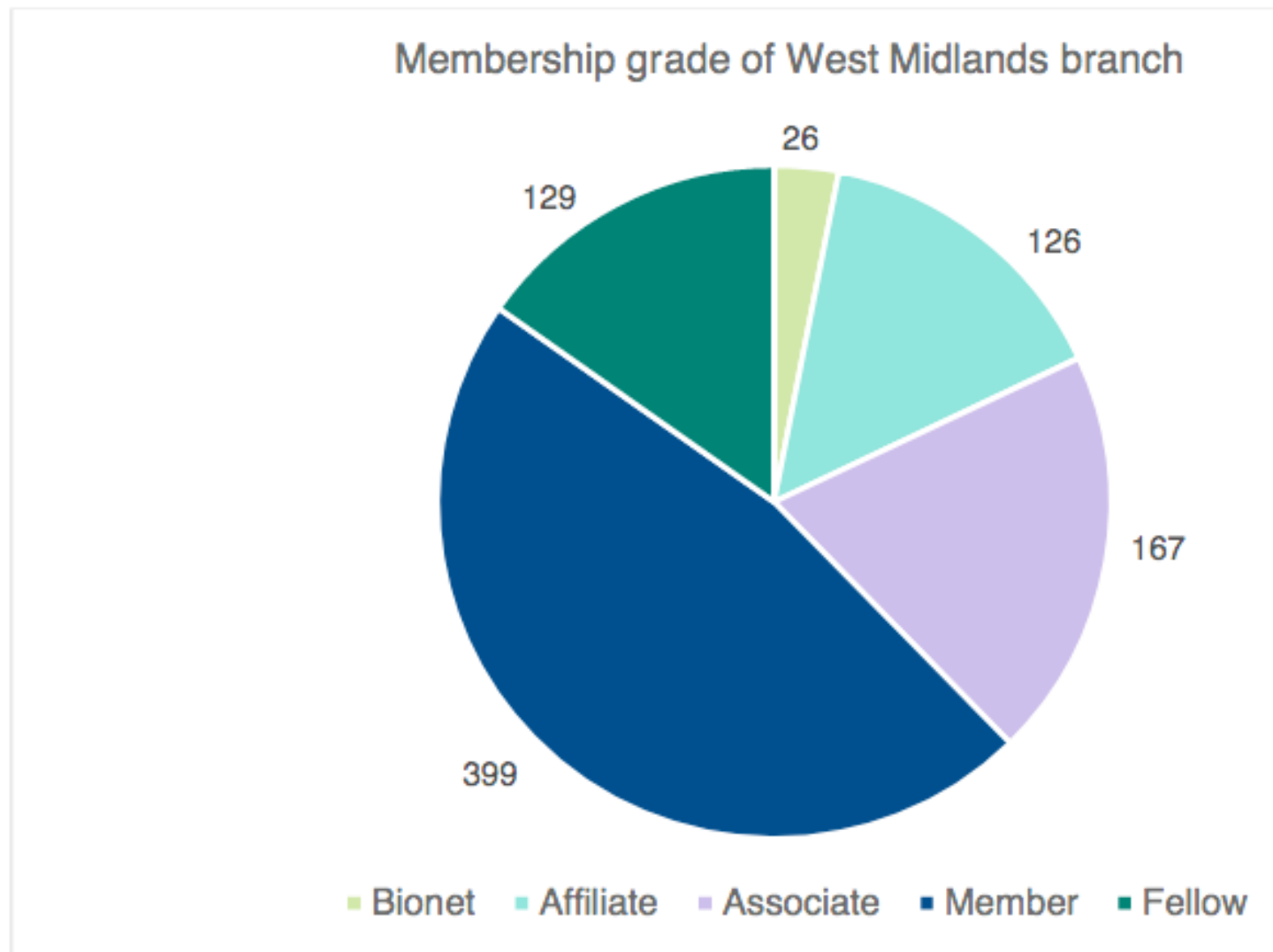
# West Midlands Branch



## West Midlands

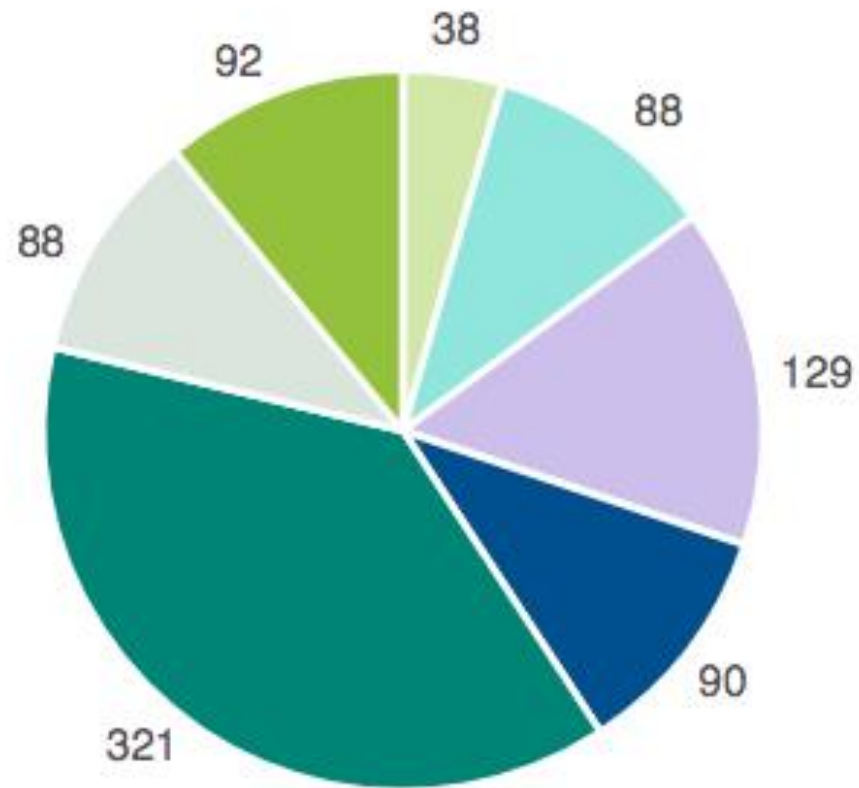
Branch members: **847**

Jan 2020



## West Midlands branch members by county

Jan 2020



Herefordshire

Shropshire

Staffordshire

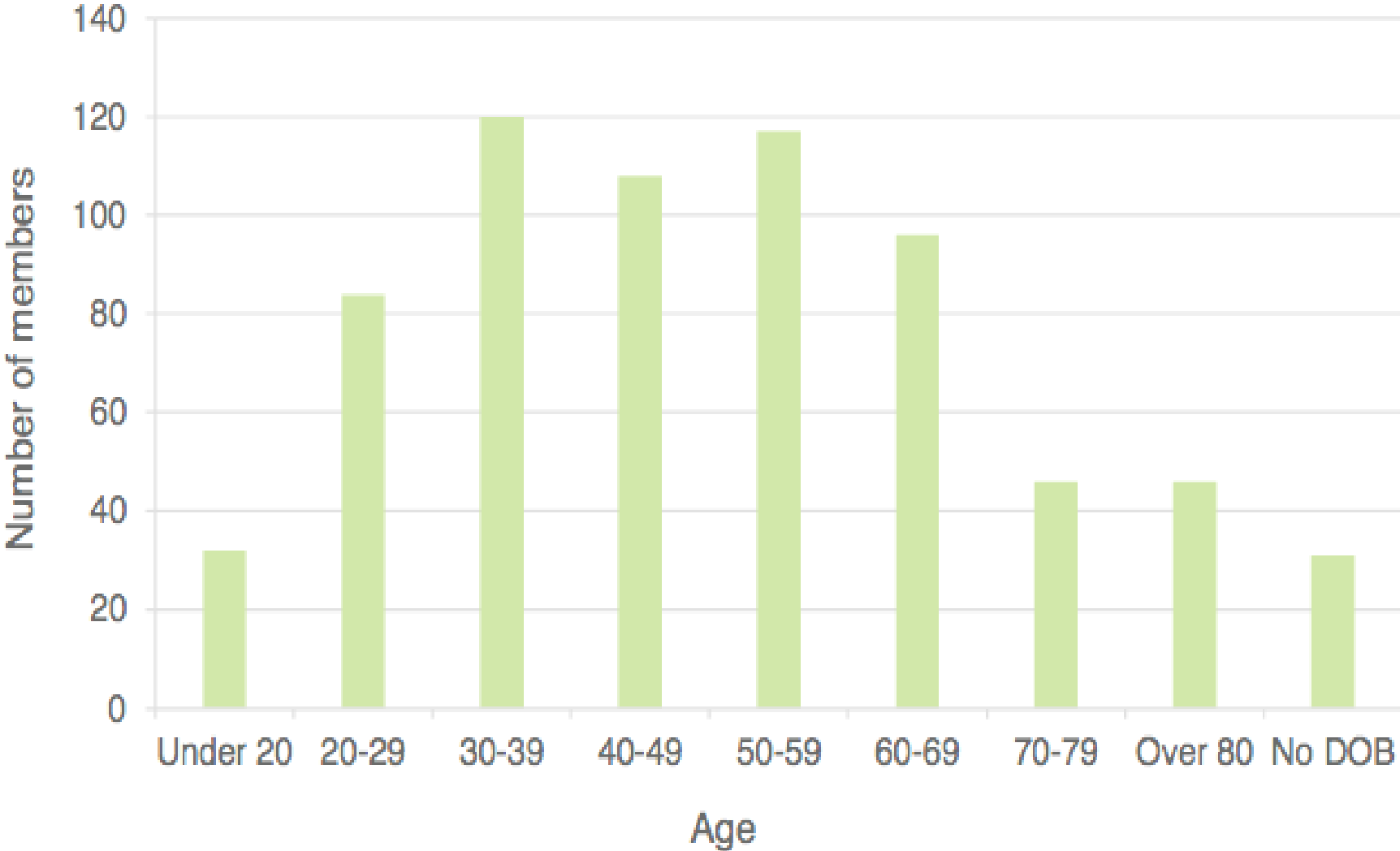
Warwickshire

West Midlands

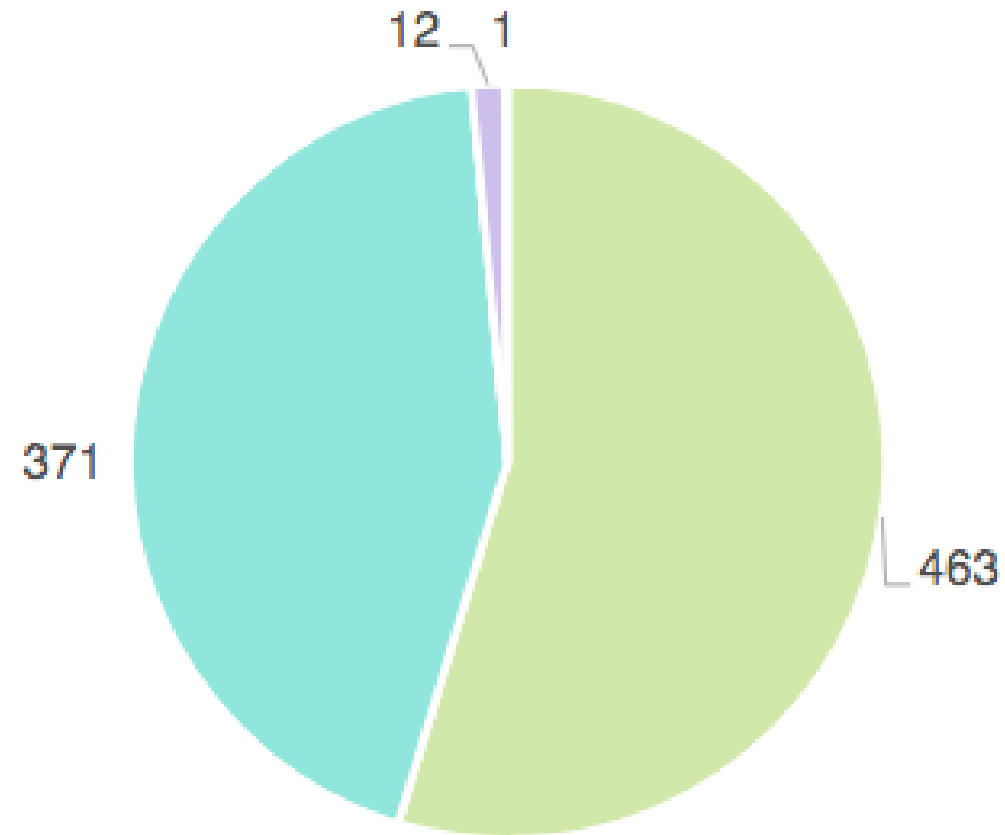
Worcestershire

Other

# Age of West Midlands branch members



## Gender profile of West Midlands branch



■ Male ■ Female ■ Not set ■ Prefer not to say

# Social Media

Twitter

@RSBWestMids 620 followers

Instagram

[https://www.instagram.com/rsb\\_west\\_midlands/](https://www.instagram.com/rsb_west_midlands/)

# Events over the last 12 months

# December 2019

## Christmas social, seasonal talks and festive quiz

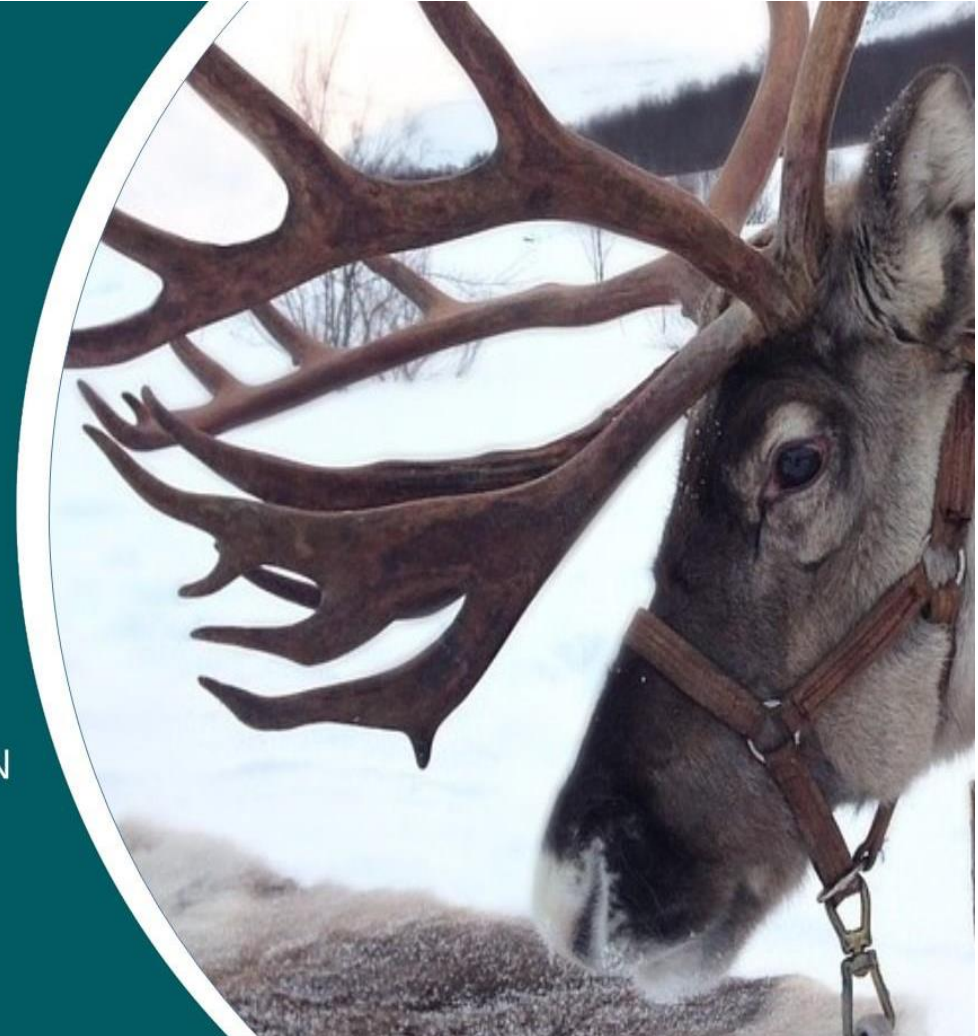
Join the West Midlands branch for a festive series of short talks, followed by a biology-related quiz and seasonal sweet treats and refreshments at their second Christmas social.

Date: Tuesday 10 December

Time: 19:00 to 21:00

Location: Birmingham City University, Birmingham B15 3TN

Tickets: RSB members £3, Non-members £5





# January 2020



## Talk on Blood Vessels

## Tudor Grange School, Solihull

# February 2020



## Forestry Talk

The new Institute  
of Forest  
Research,

BiFoR

University of  
Birmingham

February  
2020



Darwin Festival,  
Shrewsbury

Darwin's Worms  
Emma Sherlock  
NHM

# February 2020



Dr Philip Young

Committee  
Meeting

University  
of Warwick

May  
2020

**Ask an epidemiologist**  
COVID-19 Q and A  
twitter takeover

Answering your questions  
Live on Twitter  
19.00 until 20.00 BST  
28 May 2020

**Submit your questions using**  
**#RSBQandA**



RSB Twitter  
Take-over

Daniel

COVID-19  
Talk + Q&A

May, June, July, August, Sept, Oct



Virtual  
Quizzes

Jill & Ben

# Online Committee Meetings April, June, September

# West Midlands' Branch Committee



**Chair:** Dr Sue Howarth CBiol FRSB

**Treasurer:** Lesley Payne CBiol MRSB

**External Communication Secretary:**

Lesley Payne CBiol MRSB

**Meetings Secretary:** Amelia Lakin

AMRSB

**Student Engagement Coordinator:** Dr

Phillip Young FRSB

**Events Coordinators:** Norma

Broadbridge MBE FRSB, Dr Caroline

Day CBiol FRSB, Dr Daniel Franklin

MRSB, Ben Glover, Dr Jill Johnson

MRSB, Dr Luisa Orsini MRSB, Dr Sarah

Williams MRSB.



# Amelia Lakin, AMRSB



Phlebotomist.  
Biomedical Assistant, Virology  
& Molecular Biology.



Meetings Secretary  
Social Media  
(Instagram)



BSc (Hons) Human  
Biology



MSc Biomedical Science

# Luisa Orsini, MRSB

Our newest committee member

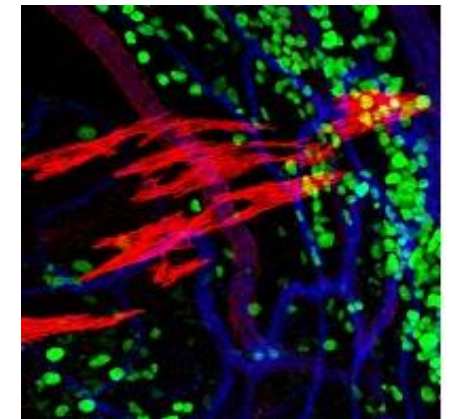
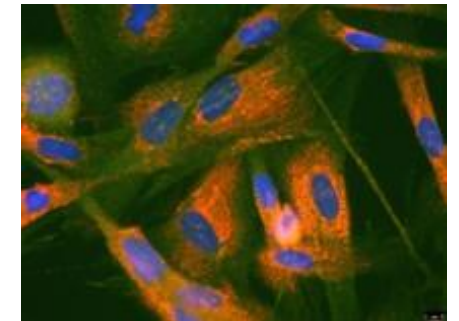
Senior Lecturer in Biosystems and Environmental Change at the  
University of Birmingham

# Ben Glover

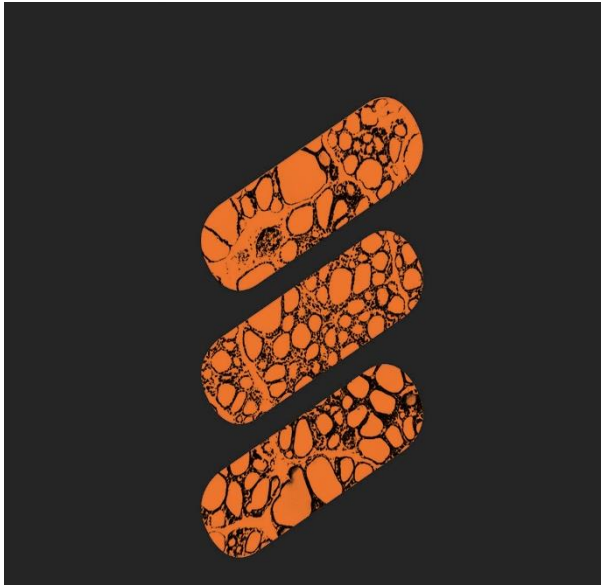
Youngest RSB branch committee member?

# Jill Johnson PhD MRSB

Lecturer in Biomedical Science  
College of Health and Life Sciences, Aston University  
West Midlands branch committee member and quizmaster  
Girl Guide Leader  
Biocrafter  
Cat lover



# Sue Howarth FRSB, Chair RSB/WM



# Future Events - Definite

- Charter Lecture
- November quiz
- AGM + Hedgehog talk

# Charter Lecture: 07 Oct 2020

## Biology Week: 2020 Charter Lecture and Q&A

The West Midlands branch's online annual charter lecture will be delivered by **Professor Graham Medley**, from the London School of Hygiene and Tropical Medicine and the Scientific Advisory Group for Emergencies (SAGE). The lecture has the timely theme of infections, disease risks and control, with a focus on COVID-19.

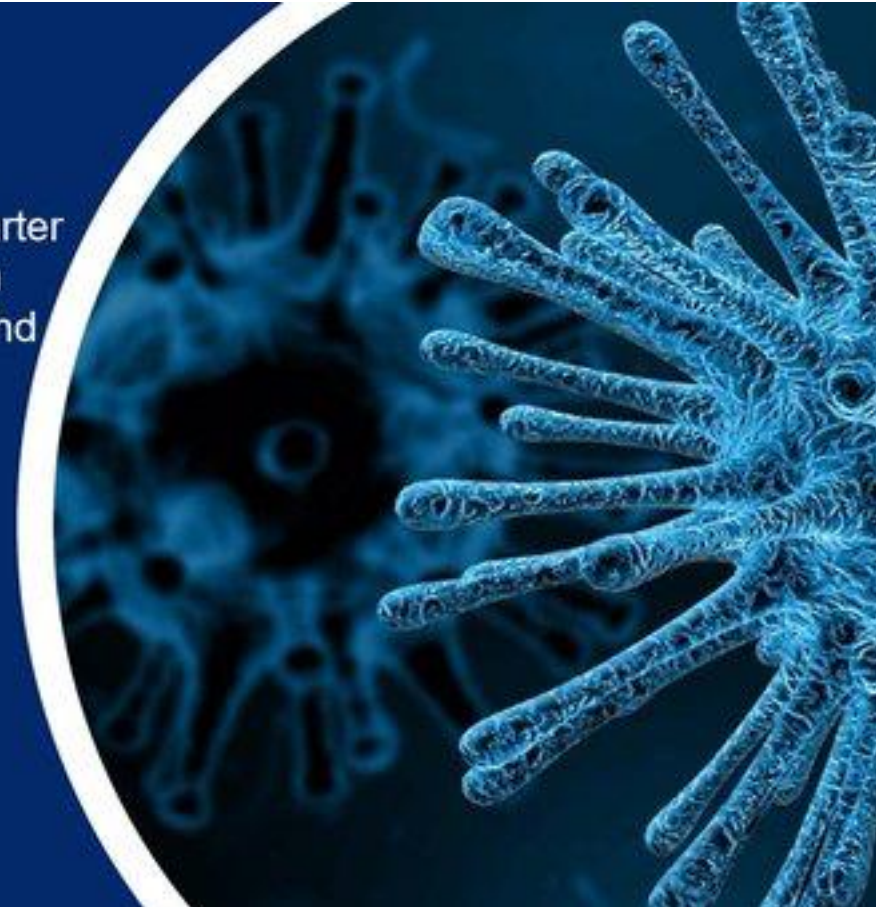
**Date:** 7<sup>th</sup> October 2020 | 19:00-20:30

**Location:** Online (Zoom)

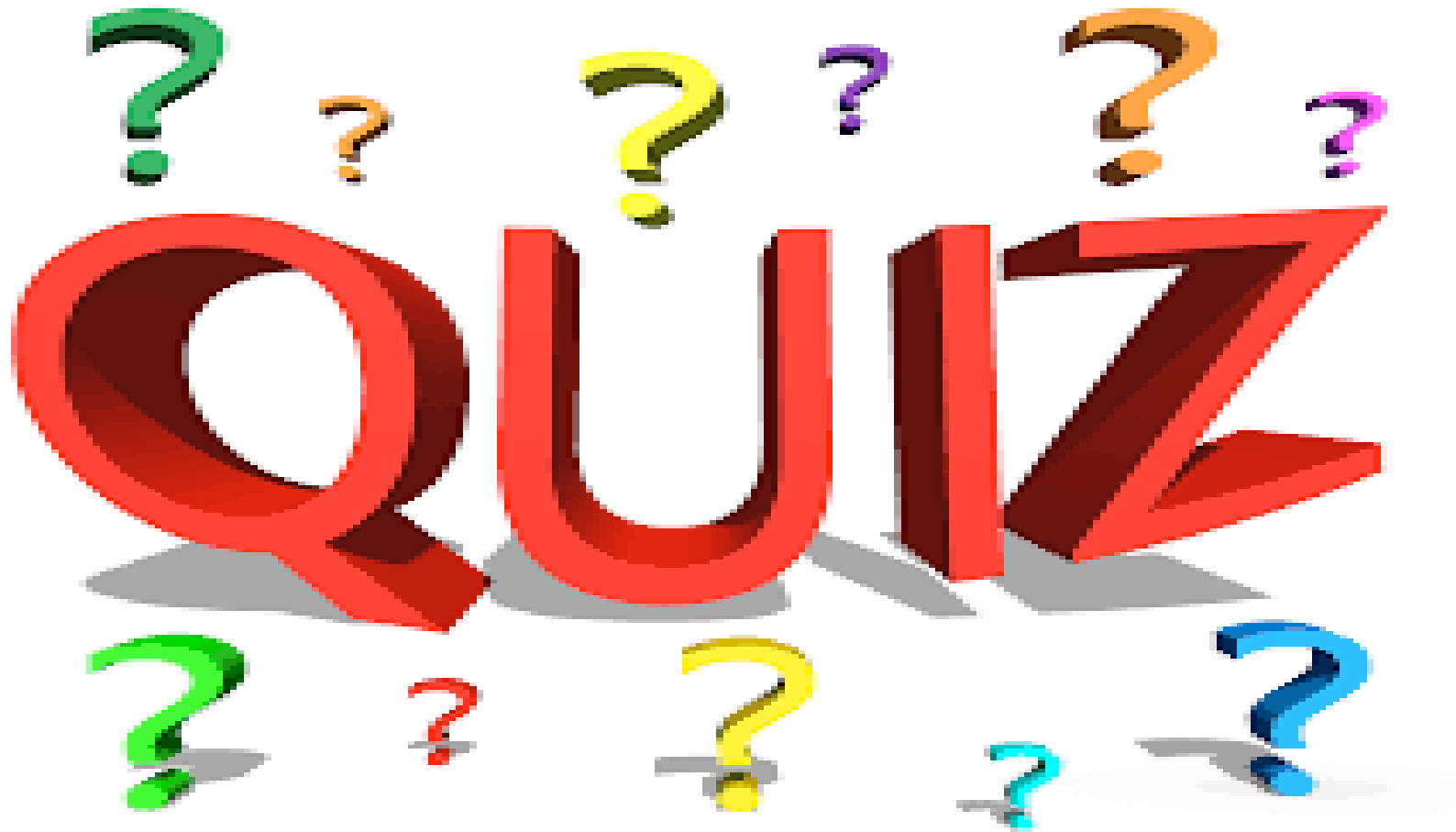
**Price:** Free



Find out more about us:  
[www.rsb.org.uk/WestMidlands](http://www.rsb.org.uk/WestMidlands)



# November Virtual Quiz





# November AGM & Hedgehog Talk



## AGM and Hedgehog Talk

The West Midlands branch Annual General Meeting will follow a talk on hedgehog ecology, conservation, and habitat improvement delivered by Dr Deborah Wright.

**Date:** 17<sup>th</sup> November 2020 | 19:00-20:30

**Location:** Online (Zoom)

**Price:** Free

Find out more about us:

[www.rsb.org.uk/WestMidlands](http://www.rsb.org.uk/WestMidlands)



# Future Events – Planning

# December Quiz and Xmas Social



- Quiz
- AN Other game/puzzle
- Short talk/s – speaker/s wanted

# Pioneers of Biology series

- Frank Pantridge – Developed the portable defibrillator
  - Creating a new rhythm for life – 19<sup>th</sup> February in Northern Ireland



# Pioneers of Biology series

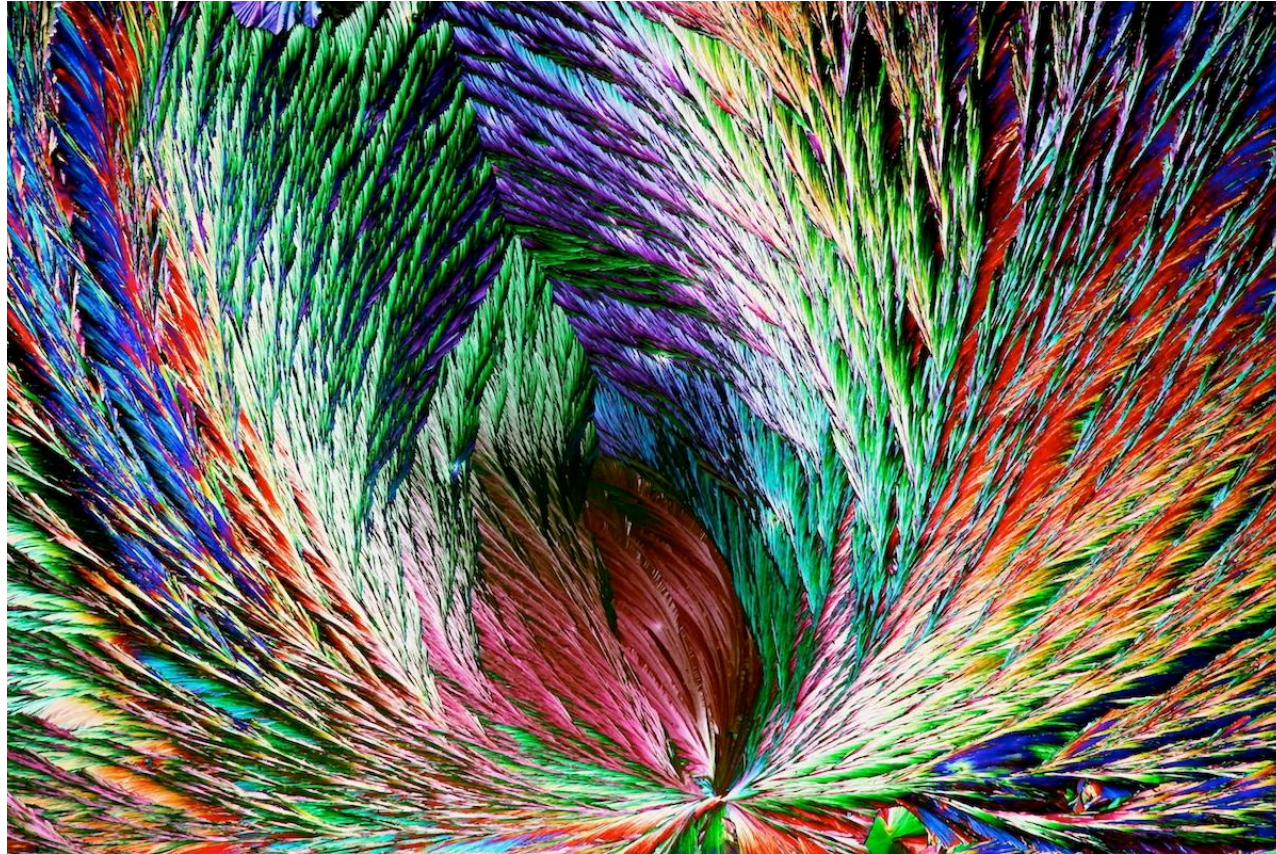


Maurice Wilkins –  
produced the first clear X-  
ray images of DNA; shared  
the 1962 Nobel Prize for  
Physiology with Watson &  
Crick

Speaker: Sir Paul Nurse

Venue: University of  
Birmingham

# Photography Competition



# Online Darwin Festival Feb 2021



Search is on for speaker

# Visit to Slimbridge, WWT







The BIFoR FACE facility

Visit to  
**BiFoR**

# Questions and Suggestions

Thank you